



Idaho Board Of
Professional Engineers^{and}
Professional Land Surveyors

FALL/WINTER 2021-22 NEWS BULLETIN / Edition 68



Idaho Board of Licensure of Professional Engineers and Professional Land Surveyors

Fall/Winter 2021-22 - NEWS BULLETIN 68th EDITION

Board Members

George A. Murgel, P.E., Ph.D, Chair, Kuna

Glenn Bennett, P.L.S., Vice Chair, Boise

Richard L. Jacobson, P.E., Secretary, Meridian

Raymond J. Watkins, P.E., Member, Coeur d' Alene

Tom Ruby, P.L.S., Member, Twin Falls

John Tomkinson, Public Member, Star

Keith C. Brooks, P.E., P.L.S., Member, Burley

Board Staff

James L. Szatkowski, P.E., Deputy Director

jim.szatkowski@ipels.idaho.gov

Jennifer Rowe, Administrative Assistant

jennifer.rowe@ipels.idaho.gov

Edith Williams, Technical Records Specialist

edith.williams@ipels.idaho.gov

Board Phone Number: (208) 373-7210

INSIDE THIS EDITION

Board Member Highlights

Introduction

Board Decisions

Statute and Rule Changes

Education

Examinations and Licensure

Enforcement

Calendar of Events

INTRODUCTION

This NEWS BULLETIN is distributed a minimum of twice per year by the Idaho State Board of Licensure of Professional Engineers and Professional Land Surveyors to inform the public and the State's Professional Engineers and Professional Land Surveyors of those events which significantly affect the professions.

Board Home Page <https://www.ipels.idaho.gov>

Board Member Highlights

Governor Appoints Keith C. Brooks, P.E./P.L.S as Engineer Member



Keith Brooks was born and raised in Phoenix, Arizona. He was on active duty in the U.S. Navy from 1975 to 1980 and in the reserves from 1980 to 1997.





Board Member Highlights

Keith graduated from the University of Idaho in December 1985 with a BSCE. He worked as a student surveying technician for three summers while in college with the Bureau of Reclamation. He has worked as a Civil Engineer for the Bureau of Reclamation in the Upper Snake Field Office from Jan 1986 to November 2021. Keith received his PE in June 1993 and his PLS in January 1997.

His career was spent working as an operations and maintenance engineer and in charge of dam safety on the eight dams and numerous canal systems in Eastern Idaho and Western Wyoming. Keith has also been the surveyor for the office on the Reclamation lands around the reservoirs and dam safety instrumentation. Keith is a widower with one child, Tyrell (29) and enjoys reading, camping, hunting and fishing. He lives in Burley with his dog Belle.





Introduction



Message from DOPL Administrator, Russ Barron

The Division of Occupational and Professional Licenses (DOPL) organization and transition is moving along, and our new organizational chart will be completed by the end of November. This effort has required nearly 25% of DOPL employees to apply for positions because of needed classification changes and alignment, and the need to follow appropriate HR policies. As we complete the process and vacant positions are filled, we will begin implementing the new structure as shown by a high-level chart on the following page, and we will attempt to relocate teams together in one physical location when possible. This may mean that staff will relocate to another DOPL office until all staff are moved into the permanent location at the Chinden Campus next year.

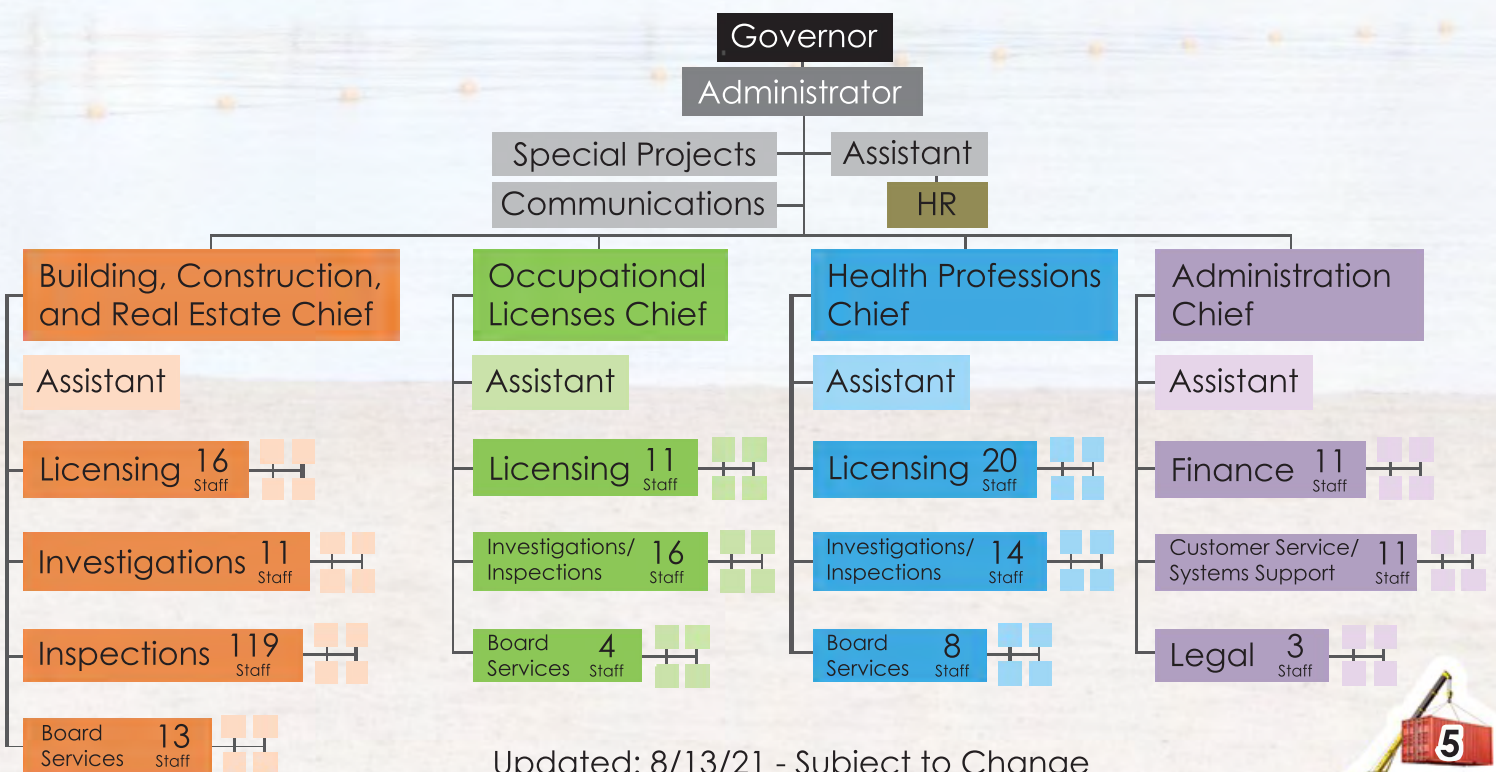
The following chart demonstrates how teams of like functions will be arranged within each of the main sections.



Introduction



Idaho Division of Occupational and Professional Licenses



Updated: 8/13/21 - Subject to Change





Introduction

Message from DOPL Administrator, Russ Barron (Continued)

Construction began on Building 4 of the Chinden Campus last June. It is on schedule to be completed by March 2022. Once construction is completed, it will take a few more weeks to install all workstations and technology. Then, we will begin moving employees into the newly renovated building with completion scheduled by July 1st. The building design includes several Board rooms and conference rooms to accommodate the needs of Boards. Meetings will be scheduled in rooms based on the number of public individuals expected to attend. The meeting rooms will be equipped with audio and visual technology to facilitate hybrid meetings of both in-person and video attendance.

We have been working with the Idaho Division of Human Resources on the appropriate classification for managing the professional land surveying licensure program. In the meantime, this work is being covered through a contract. We are currently assessing our use of legal services across the division and will announce anticipated changes, if any, once that is completed.



The background of the page is a photograph of an industrial setting, likely a steel mill. A large, orange ladle is suspended by a crane and is pouring a thick stream of bright orange molten metal. The scene is filled with industrial structures, including ladders and beams, and the overall atmosphere is one of intense heat and activity. The text is overlaid on a white, semi-transparent shape on the left side of the page.

Introduction

The Governor's office is working diligently to fill current vacant Board Member positions. We continue to encourage individuals to go to the Governor's website and apply for Board positions whether they are currently vacant or not.

Work has begun on acquiring a new technology system that will support all functions for DOPL Boards. This is not an overnight project and will take a few years to accomplish, with implementation of a new system expected in 2025. Right now, we are gathering requirements and considering any needed process improvements before issuing a Request for Proposal next spring. We plan to have a vendor hired by this time next year.

While there have been numerous challenges so far in reorganizing eleven agencies into one, great progress is being made. This transition is a two-year endeavor, and we are about halfway there. We appreciate your patience, and we appreciate the work you do. DOPL staff are happy to support the Board's needs and address customer and stakeholder issues and questions as they arise.





Introduction

Message from the Interim Director, Jim Szatkowski

As stated in the last news bulletin, the Board staff has transitioned to the new Department of Occupational and Professional Licenses (DOPL) organization and is no longer an independent agency. All staff members work for DOPL, and not the Board, going forward. Edith Williams, Jennifer Rowe and myself will still be the primary staff contacts for the Board and the PE/PLS professions for the time being and we're still located in the Meridian office. While participation in NCEES has continued, it has been virtual for most of 2020 and 2021 – including the annual meetings. We hope to be back at in-person meetings with NCEES during **spring of 2022.**

>Lorem ipsum dolor sit amet, consectetur adipiscing elit. Sed ut perspiciatis unde omnis iste natus error sit voluptatem accusantium doloremque laudantium, totam rem aperiam, eaque ipsa quae ab illo inventore veritatis et quasi architectoni aeternum in voluptate. In voluptate et dolore magna aliqua. Duis mollis, est id commodo ultricies. Gravida in faucibus vitae pulcrum posuere cubilia curae.






Introduction

As you know, or should know, the CPD rule **(IDAPA 24.32.01.200-203)** is suspended during the period of the Governor's declared emergency for the COVID-19 pandemic. We've all faced challenges during this pandemic, but, at least I've found, that hasn't reduced the amount of online training available. In fact, the number of CPD logs (& records) I've reviewed since the rule has been waived hasn't went down much at all. I commend all of you that have continued your professional development during the pandemic. That is the epitome of a professional. One who turns challenges into successes and perseveres. Thank you for holding the standards bar up.





Introduction



Message from the Interim Director, Jim Szatkowski (Continued)

The pandemic also has been an opportunity to put technology to work and find new ways of doing project meetings, reviews, and collaborations. Sure, it has been a challenge – but we're all up to the challenge. Conferences have occurred – albeit with new technology and ways of doing presentations and conducting seminars.


As professional engineers and professional land surveyors in Idaho, we can be proud of our accomplishments during this period in our history. We've licensed more new engineers and surveyors than in the years just prior to the pandemic. The record growth in our state explains some of that – including being ranked by several publications as being one of the best places to live. We need to ensure that we don't let our standards drop as our numbers grow and the competition heats up. Let's do our part so the best place to live - stays that way.

Tracts and Lots:

After publishing the last newsletter which contained a Board decision regarding a matter in Twin Falls county regarding tracts and lots on plats, several other jurisdictions raised an issue with the Board in that their jurisdiction had given different definitions to the terms lot and tracts. The Board reviewed their article and after conferring with Board Counsel and the representative of the other jurisdictions that appeared at the Board Retreat meeting in Moscow on August 3, 2021, the Board reaffirmed the last statement in their previous article. "Where local ordinance does not follow Idaho Code, the professional land surveyor must work with the local authority having jurisdiction to resolve the conflict in a productive and professional manner." The Board urges all professionals to work with the local jurisdictions and conform to their ordinances and policies.



Board Decisions



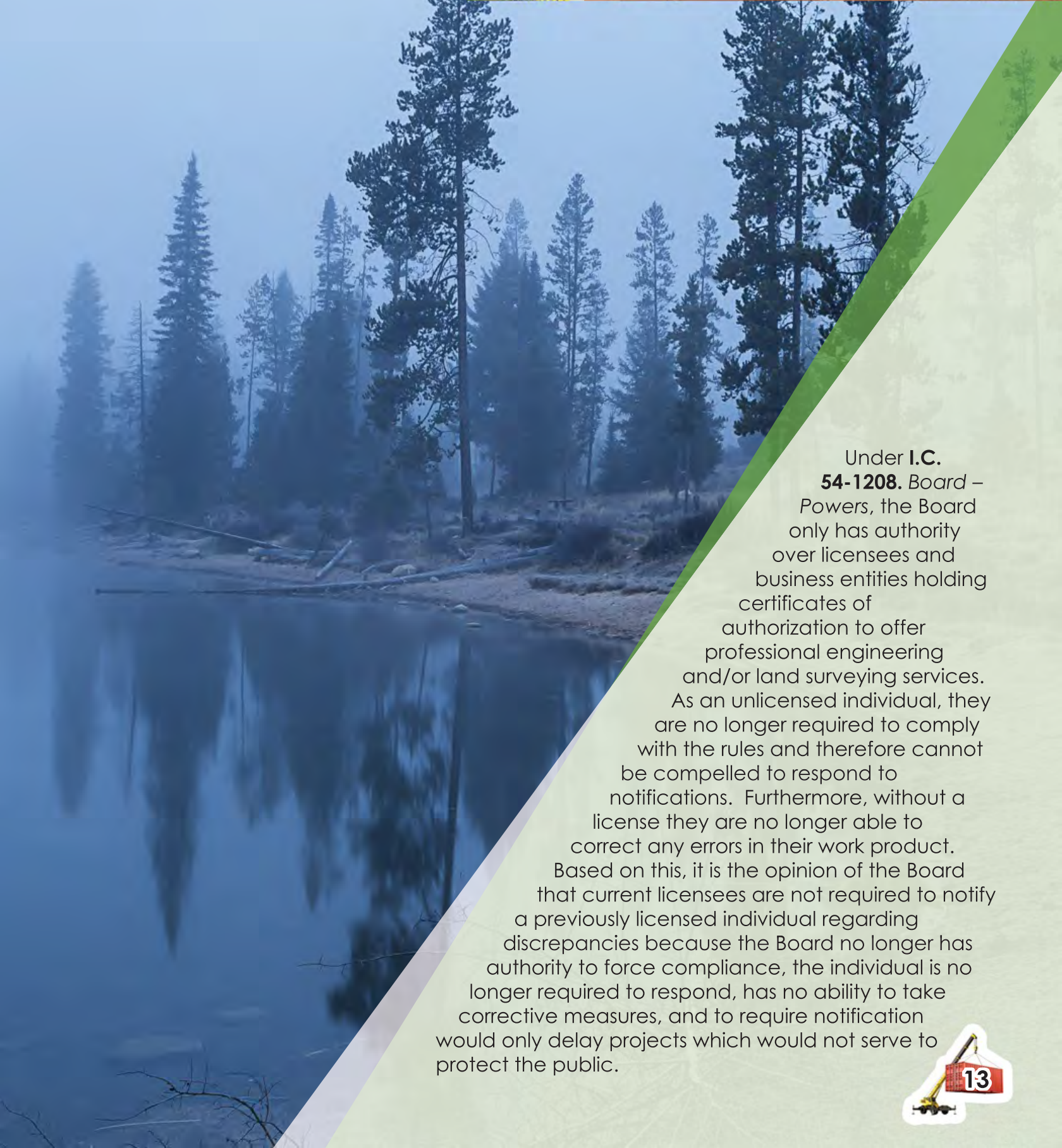
Rules of Professional Responsibility, Obligation to Communicate a Discrepancy:

Recently a question came to the Board regarding a situation in northern Idaho wherein a surveyor licensee surrendered their license in lieu of discipline and sanctions. This individual had performed the majority of boundary surveys in the area over the past 20 years. Other surveyors are now beginning to perform surveys in the area and in retracing this individual's previous surveys significant discrepancies in corner positions are being discovered. The question posed relates to **IDAPA 24.32.01.100.04** - *Obligation to Communicate Discovery of Discrepancy* and whether or not current licensees are required to contact the individual as outlined in the rule. Because this issue exists in other parts of the state, and the question may continue to be raised, the Board has chosen to offer the following opinion.





Board Decisions



Under **I.C. 54-1208. Board – Powers**, the Board only has authority over licensees and business entities holding certificates of authorization to offer professional engineering and/or land surveying services. As an unlicensed individual, they are no longer required to comply with the rules and therefore cannot be compelled to respond to notifications. Furthermore, without a license they are no longer able to correct any errors in their work product. Based on this, it is the opinion of the Board that current licensees are not required to notify a previously licensed individual regarding discrepancies because the Board no longer has authority to force compliance, the individual is no longer required to respond, has no ability to take corrective measures, and to require notification would only delay projects which would not serve to protect the public.



Board Decisions

Rules of Professional Responsibility, Obligation to Communicate a Discrepancy (Continued):

The Board also asks that current licensees that retrace other surveys performed by former licensees keep the following rules in mind while fulfilling their duties for their clients.

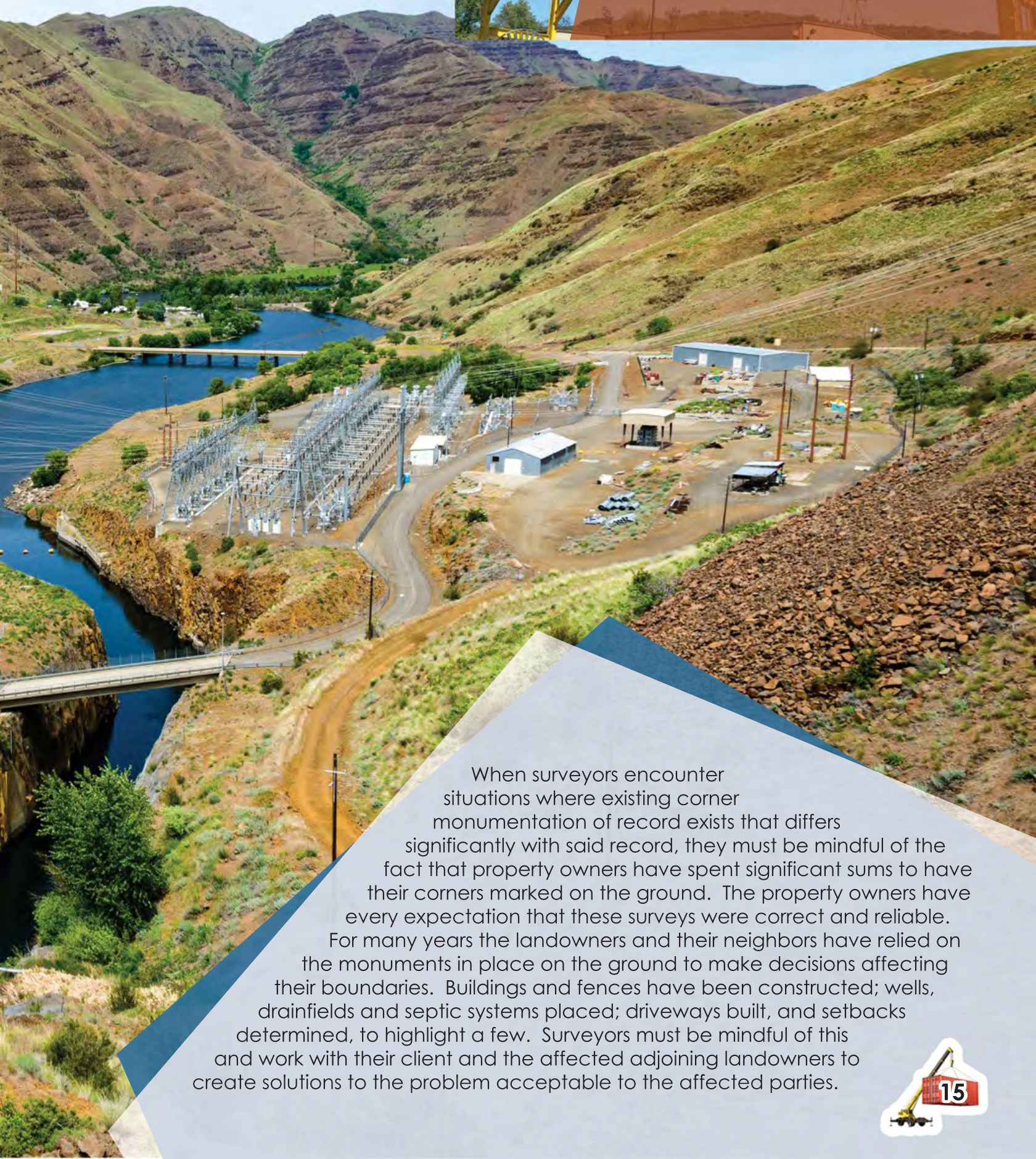
IDAPA 24.32.01.100.01 - *Primary Obligation.* All Licensees and Certificate Holders must at all times recognize their primary obligation is to protect the safety, health, and welfare of the public in the performance of their professional duties.

IDAPA 24.32.01.100.06. *Obligation to Affected Landowners.* Land surveyors have a duty to set monuments at the corners of their client's property boundaries in compliance with **54-1227, Idaho Code**. Per Subsection **100.04** above, land surveyors also have a duty to notify other licensees of a material discrepancy prior to setting monuments that represent a material discrepancy with a prior survey. **If a monument is to be set at a location that represents a material discrepancy with an existing monument at any corner of record, land surveyors must also notify in writing all affected adjoining landowners and the Board prior to setting the new monument.**





Board Decisions



When surveyors encounter situations where existing corner monumentation of record exists that differs significantly with said record, they must be mindful of the fact that property owners have spent significant sums to have their corners marked on the ground. The property owners have every expectation that these surveys were correct and reliable. For many years the landowners and their neighbors have relied on the monuments in place on the ground to make decisions affecting their boundaries. Buildings and fences have been constructed; wells, drainfields and septic systems placed; driveways built, and setbacks determined, to highlight a few. Surveyors must be mindful of this and work with their client and the affected adjoining landowners to create solutions to the problem acceptable to the affected parties.



Board Decisions

Rules of Professional Responsibility, Obligation to Communicate a Discrepancy (Continued):


They must not make boundary determinations without considering these monuments and how disregarding them to establish new monument positions many feet, if not yards away from monuments the landowners have relied on for many years can, and will, affect their boundaries. When a licensee finds conflict between the deeds and the monuments/ improvements they should endeavor to correct the deed (boundary agreement) rather than the position of the monument.



Board Decisions

Surveyors should strive to be the solution to the problem - not the perceived reason a problem exists. They should work with the affected parties, local jurisdictions, attorneys, title companies, professional societies and other stakeholders to craft solutions that resolve the problem without causing clouded title, expensive litigation, and conflict between neighbors. Licensees must be mindful of the fact that, while they have a client paying them for their services, every decision they make during the course of determining their client's boundaries affects others. In other words, the "public" encompasses everyone, not just their client.





Statute and Rule Changes

Out-year Rule Changes Considered by the Board

All the Board's rules are proposed to be evaluated in fiscal year 2023. The legislature did not approve the Board's rules again this year so the Board implemented temporary rules effective at the adjournment of the legislature. There were no changes proposed. One new rule may be added to adopt the National Geodetic Survey's datums for state plane coordinates in 2023.

Out-year Law Changes Considered by the Board

Housekeeping law changes in 2022:

- Basis of bearing
- Corner records
- Interns
- Monument definition
- Ties to Public Land Survey Corners
- Signatures





Board meets with the University Deans and Faculty

The Board met with the Deans of the five universities that offer engineering programs and faculty and staff for the two surveying programs in the state. Presentations addressed faculty licensure, status of enrollment, ABET accreditation and current trends facing engineering and land surveying at the university.

UI Offers Civil PE Review Course in Boise

Time

12 three-hour sessions on Thursdays from 5:30 - 8:30pm, running January 20, 2022 through April 14, 2022 which includes a mock exam. There will be no meeting during the Boise school district's spring break. The State Board of Licensure for Professional Engineers and Professional Land Surveyors will be holding the Civil PE exam April 22, 2022.





Education

UI Offers Civil PE Review Course in Boise (Continued)

Location

Classes will be held at the University of Idaho Water Center, 322 E. Front St, Boise, ID 83702. Due to COVID-19, we will limit the in-person course to 25 students but we will livestream the course to others who wish to attend online. In-person seats will be on a first come, first serve basis.

Summary

UI Boise has offered this 12-week Professional Engineering (PE) Review Course each spring for many years. It prepares engineers to take the PE Exam. We usually offer one PE track for Civil Engineering. Each three-hour session is delivered by subject experts.

Instructors

Subject experts have been selected from local industry, universities, and government. Organizations include University of Idaho-Boise College of Engineering, Boise State University College of Engineering, The State Board of Licensure for Professional Engineers and Professional Land Surveyors, and Mountain Home AFB.





Education

Who Should Attend

Engineers planning to take the State's PE Exam or those simply wanting to update skills and knowledge in the field of Civil Engineering.

Textbooks

Instructor teaching materials will be given to you digitally on a weekly basis. You are welcome to purchase the textbooks below but it is not mandatory for this course. You will receive a 15% discount from PPI. Contact us for the discount code.

- Civil Engineering Reference Manual for the PE Exam, 15th edition, Michael R. Lindeburg.
- Practice Problems for the Civil Engineering PE Exam, 15th edition, Michael R. Lindeburg





Education

UI Offers Civil PE Review Course in Boise (Continued)

Free Retake Policy

If you complete the PE Review Course and do not pass the PE Exam, you may retake the course again the following year at no additional charge.

Price & Enrollment Information

\$950.00 Contact Denise Engebrecht at (208) 364 6123 or denisee@uidaho.edu to register.





Examinations and Licensure

NCEES PE Examination Changes

Beginning in 2022, the PE Civil exam will be **computer-based**, this link will give you the conversion to CBT dates of all exams and tell you which are administered year-round at NCEES-approved **Pearson VUE test centers**.

For the current examination schedule see:
<https://ncees.org/exams/schedule/>

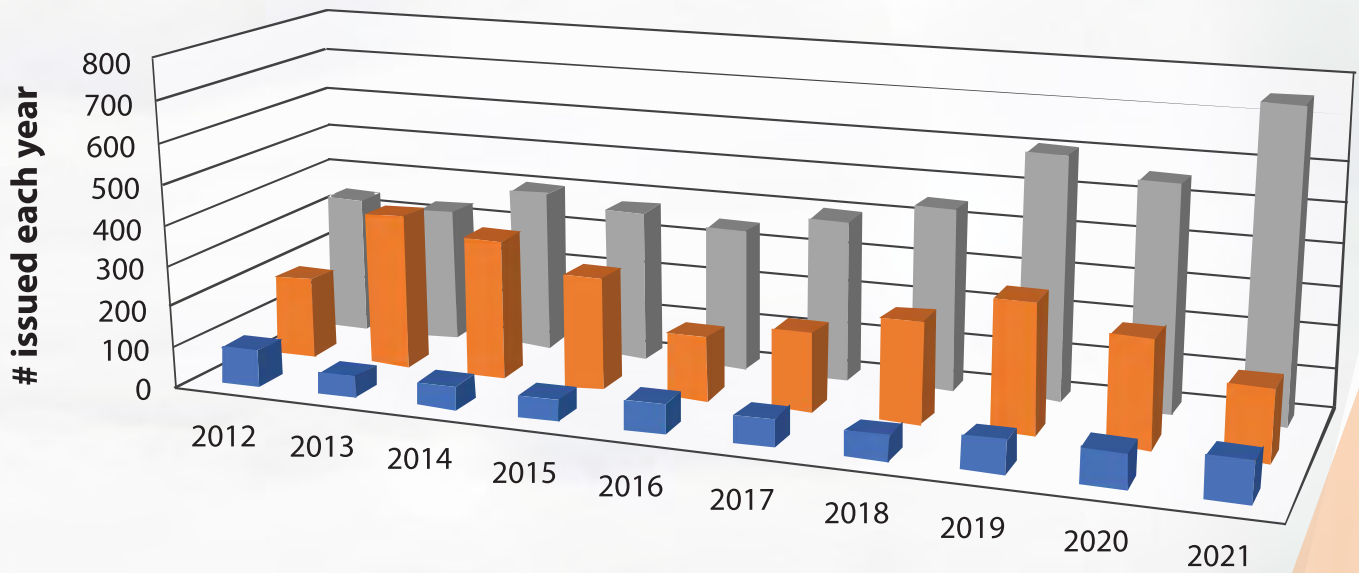


Examinations and Licensure

New Idaho Professional Engineers and Land Surveyors Licensed by Examination

(April 1 through September 30 of 2021)

Professional Engineers/FE Exams

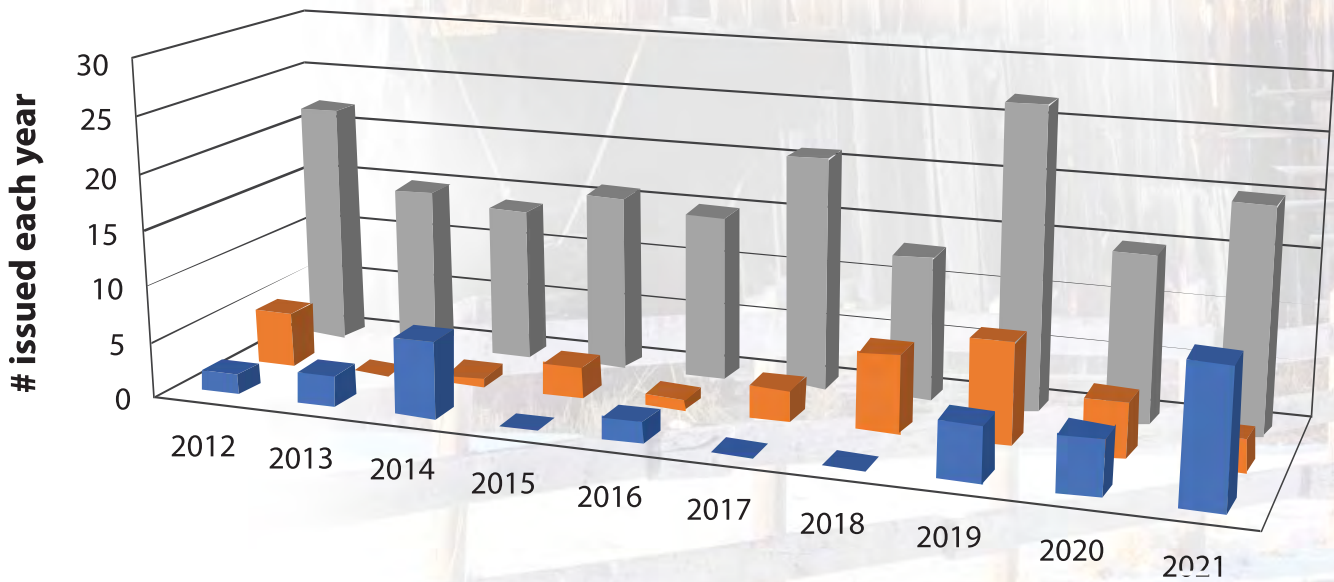


	2012	2013	2014	2015	2016	2017	2018	2019	2020	2021
PE by Exam	93	56	60	55	76	71	63	83	87	104
FE Exams Passed	202	386	347	279	161	196	252	322	265	178
PE by Comity	348	335	408	381	355	401	451	603	556	755



Examinations and Licensure

Professional Land Surveyors/FS Exams



	2012	2013	2014	2015	2016	2017	2018	2019	2020	2021
PLS by Exam	2	3	7	0	2	0	0	5	5	12
FS Exams Passed	5	0	1	3	1	3	7	9	5	3
PLS by Comity	22	15	14	16	15	21	13	27	15	20

Disciplinary Actions

The following is a summary of a final action taken by the Board since the publication of the last news bulletin.

In the matter of Matthew Gotham, PLS, an investigation found that Gotham had several deficiencies in a survey in Teton County. Gotham, in a stipulation and consent order accepted by the Board, admitted that there was sufficient evidence such that the Board could find that he had violated the laws and rules governing the practice of land surveying in the state of Idaho:

- (a) Failing to affix the seal, signature and date on a final land survey,
- (b) Failing to properly mark monuments set by him in accordance with **Idaho Code 54-1227** and such that measurements between monuments could be made to the nearest one-tenth (0.1) foot (**Idaho Code 50-1303**),



Enforcement

(c) Failing to file with the Teton County recorder the survey within 90 days of completing the survey as required due to his setting the monuments at the corners of record which were not previously monumented **(Idaho Code 55-1904(3))** and

(d) Failing to notify the adjoining landowners, other licensees and the Board prior to setting the monuments at locations that represent a material discrepancy with an existing monument at corners of record, despite rejecting five (5) existing monuments and setting new monuments **(IDAPA 24.32.01.100.06)** and

(e) Failing to set monuments at all field located corners **(Idaho Code 54-1227)**.

The order included a formal reprimand, fine and prosecution fees.





Enforcement



Case Dismissed by the Board

A matter was brought before the Board wherein a Land Surveyor had given written notice to a land owner regarding doing survey work on his property and the land owner had denied the request. The surveyor then approached the property from the adjacent property and completed the work on the property line between the two properties. The land owner filed a complaint with the Board. The Board reviewed the complaint and found no violation of **Idaho Code 54-1230** and dismissed the matter.



In Memory of Those Recently Deceased

IN MEMORY OF THOSE RECENTLY DECEASED

First Name	Last Name	Licence Number	Town	State	Deceased
Richard A	Jobes	P-1600 (CE/SE)	Boise	ID	4/2/21
Jerald w	Kunkel	P-15602 (CE)	Arlington	TX	3/11/21
V Eugene	Cameron	L-708	Coeur d'Alene	ID	2/7/21
Dale M	Teel	P-1844 (ME)	Idaho Falls	ID	11/5/20
Robert G	Beierle	P-4831 (ME), E-2180	Avon	IN	6/17/21
Rodney V	Oathout	P-8708 (ME)	Parkville	MO	6/11/21
Kent D	McCarthy	E-3119	Boise	ID	7/24/21
Robert A	Nelson	L-752	Meridian	ID	12/2/16

In Memory of Those Recently Deceased

HISTORICAL PHOTO

Steel camelback through truss bridge under construction
Date Approx: 1919

IN MEMORY OF THOSE RECENTLY DECEASED

First Name	Last Name	Licence Number	Town	State	Deceased
Timothy Aaron	Burgess	P-4912 (CE), E-1559	Meridian	ID	8/25/21
James F	Benthin	L-871 (LS)	Spokane	WA	8/4/18
Shirley Sue	Atteberry	L-1017 (LS)	Cambridge	ID	10/31/17
Robert Paul	Jones	P-843 (CE)	Boise	ID	9/11/21
Robert Franklin	Wall III	P-7788 (EE)	Walla Walla	WA	12/12/19
Craig Norman	Hartman	P-17567 (EE)	South Jordan	UT	12/20/20
Ronald James	Santi	PL-1918 (CE/LS) E-358	Meridian	ID	10/8/21
Allen R	Johnson	L-1029	Nampa	ID	10/1/21





Calendar of Upcoming Events

February 14-15, 2022

February 24, 2022

April 14-15, 2022

April 22-23, 2022

May 19-21, 2022

June 9-10, 2022

July 28-29, 2022

August 23-26, 2022

August 26, 2022

September 15-16, 2022

October 21-22, 2022

November 17-18, 2022

Board Meeting in Moscow, Idaho

Deadline for Registering with NCEES for April PE Exams

Board Meeting in Meridian, Idaho

PE/SE Examinations in Boise, Idaho

NCEES Western Zone Meeting in Stateline, NV

Board & ISPE Meeting in Boise, Idaho

Board Retreat in Riggins, Idaho

NCEES Annual Meeting in Carlsbad, CA

Deadline for Registering with NCEES for October PE Exams

Board Meeting in Meridian, Idaho

PE/SE Examinations in Boise, Idaho

Board Meeting with University Deans in Meridian, Idaho

Board Staff

James L. Szatkowski, PE Acting Director

jim.szatkowski@ipels.idaho.gov

Jennifer Rowe, Administrative Assistant

jennifer.rowe@ipels.idaho.gov

Edith Williams, Technical Records Specialist

edith.williams@ipels.idaho.gov

Office Phone (208) 373-7210



LEWIS-CLARK STATE COLLEGE

Engineering Technology



OVERVIEW: The Engineering Technology program provides students with skills as they relate to computer aided drafting, surveying (Civil, Geomatics), Solid Modeling and CNC Machining (Mechanical option), and other similar skill sets. In addition, the program offers a background in mathematics (through trigonometry), physics, communications, writing, and design concepts. In the second year of the program, students electing not to take the general (traditional) program may direct their study emphasis in Geographic Information Systems, Civil Engineering, or Mechanical Engineering.

DEGREE OPTIONS:

- AAS - Associate of Applied Science
- BAS - Bachelor of Applied Science

CONTACT US:

Technical & Industrial Division
www.lcsc.edu/ti
Email: tidoff@lcsc.edu
Phone: 208-792-2220

Apply Now: www.lcsc.edu/apply

RELATED CAREERS:

- Engineering technician, drafter, \$58,450
- Surveyor, \$65,300
- Engineer, \$98,190
- Civil Engineer, \$91,790
- Mechanical Engineer, \$91,500
- Civil engineering technician, \$53,600
- Mechanical engineering technician, \$58,150
- Surveying and mapping technician, \$46,350

Career data and salary information is from U.S. Bureau of Labor Statistics

"LCSC is a great state school with the feel of a private school at a low cost. Engineering tech, in every field, is about aiding engineers by collecting, visualizing, editing data and eventually constructing, modifying, and problem solving ... I have no loans and have been able to work for a city, county, and now the Washington State Department of Transportation."

Tyler MacMillan '17, Washington State Department of Transportation

"Having attempted and failed the standard curriculum-driven classes, I was almost out of fuel and ready to throw in the towel with college. Changing my degree to mechanical technology was the best decision I made. The courses are still curriculum driven but the pace is much different ... The course material and projects are designed to allow you to work at a pace more comfortable but it doesn't limit you."

Frank Lagrimanta '13, Mechanical Designer, Buck Knives

WHY LCSC? Lewis-Clark State College invites you to pursue a **better degree** at a **better price**, at a small, friendly campus that has proudly served students for over 125 years. There's a better way. **#TheWarriorWay** | Visit www.lcsc.edu to learn more!



LCSC BY THE NUMBERS

#1 lowest tuition in Idaho among public four-year institutions.

Ranked by U.S. News & World Report as **#5** in the West.

8:1 student-to-teacher ratio for career-technical programs.

Career-technical graduates have a **97%** placement rate.

81% of students receive some form of financial aid.

Ranked **#1** school for non-traditional students. (*Best College Reviews*)

130+ degrees and certificate programs.

Ranked by The Economist as **#2** in Idaho for economic value.

Lewis-Clark State College does not discriminate on the basis of race, color, religion, age, sex, national origin, disability, gender identity, or sexual orientation. This policy applies to all programs, services, and facilities, including applications, admissions, and employment. The Director of Human Resource Services has been designated to handle inquiries regarding non-discrimination policies and can be reached at 208-792-2253 or at the Administration Building, Room 102, on LCSC's campus, 500 9th Avenue, Lewiston, Idaho, 83501 TTY 1-800-377-3529.

ENGINEERING OUTREACH



University of Idaho
College of Engineering

Providing quality distance education for more than 40 years

- Graduate degrees, certificates, and professional education and development
- Fast, flexible viewing schedules
- Company tuition vouchers and VA assistance accepted



VIEW COURSES AT UIDAHO.EDU/EO



"Engineering Outreach allowed me the flexibility to continue working full-time while furthering my education. Informative courses could be applied directly to my line of work. Professors were also very willing to schedule time outside of their office hours to discuss difficulties with course material."

– Joshua O., M.S.
Mechanical Engineering

"U of I professors and staff are positive, helpful and supportive. Engineering Outreach deliveries are professional, high-quality and challenging! So glad I am a Vandal!"

– Marie T., M.S.
Statistical Science



eo-support@uidaho.edu | 208-885-6373

START YOUR SURVEYING CAREER

Academic Certificate in Land Surveying

30 Credits

For individuals with a related 4-year degree (must be determined by the state licensing board). Credits may be transferred from another institution.

Career
Professional
Land
Surveyor

Bachelor of Science in Surveying and Geomatics Engineering Technology

130 Credits

Career
Professional
Land
Surveyor

+69
credits

Associate of Applied Science in Civil Engineering Technology

61 Credits

Careers
Construction
Inspection
Materials Testing
Surveying

+37
credits

Basic Technical Certificate in Surveying Technician

24 Credits

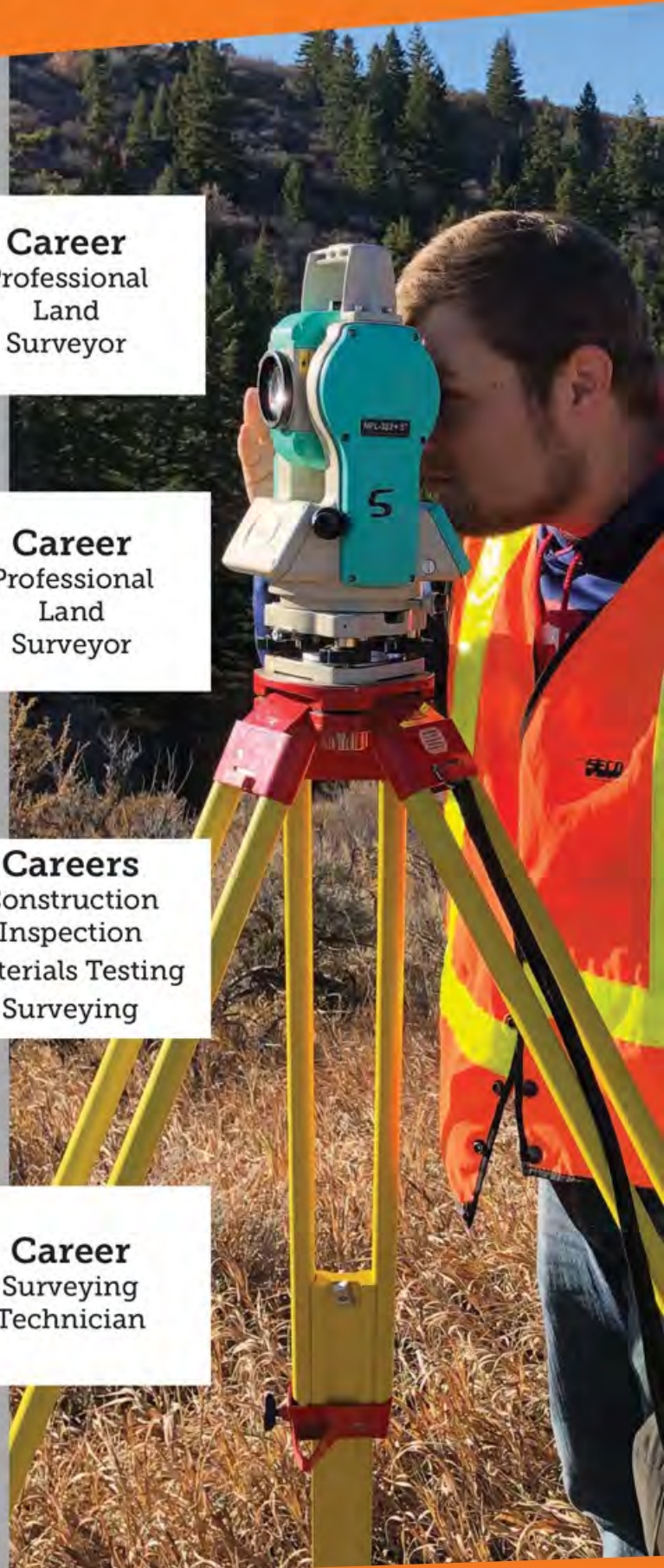
Career
Surveying
Technician



**Idaho State
University**

College of
Technology

(208) 282-2800 | isu.edu/geomatics





Fall Semester
Admission Deadline
August 13th
2022

Unmanned Aerial Systems

Intermediate Technical Certificate (ITC)

Why UAS?

As the unmanned aircraft systems (UAS) industry continues to grow exponentially, the benefits of gaining an education specific to UAS have become apparent. The College of Western Idaho plans to be a leader in UAS curriculum by launching a program that will provide state-of-the-art courses and practical instruction necessary for graduates to become UAS industry professionals.

Why CWI?

Our curriculum offers hands-on flight experience using industry standard aircraft and photogrammetry software. Students will learn to operate unmanned aircraft, process captured data properly, fly UAS missions as part of a crew, cultivate an appreciation for industry standard safety protocols, as well as develop a strong foundation of aviation fundamentals.

Program Outcomes

Possess an excellent understanding of FAA regulations
Perform flight operations with regards to airspace, weather and safety
Understand, analyze and interpret GIS data as it relates to UAS
Capture and process UAS data
Assess UAS security and privacy issues and implement solutions

Who Utilizes UAS?

- Public service and Safety
- Agriculture and Forestry
- Architecture and Construction
- Civil Engineering and Land Surveyors
- Marketing and Sales
- Natural Sciences

Key Courses

- Flight Theory and Flight Lab I & II
- Mission Planning
- GIS Basics and Remote Sensing
- UAS Privacy and Security
- Digital Imagery

Need More Info?

Contact: Tim Schuh
208.562.2360
timschuh@cwidi.edu



Achieve More!

<http://cwidi.edu/program/unmanned-aerial-systems>